

"Ajinkya Electromelt Pvt.Ltd." an Steel Solutions Group based out of Pune(India) is an end-to-end iron & steel solutions company.

**T: +91 9975950157 F: +91-20-40797797
E-mail: marketing@ajinkyagroup.in**

AJINKYA GROUP
ae

AJINKYA GROUP



VISION

Adding stainless quality to life.

MISSION

To be a globally competitive producer and preferred supplier of stainless steel.

OUR VALUES

- Safety as a way of life.
- Quality in everything we do.
- Practical care for our environment.
- A motivated team where members trust and respect each other.
- Recognition for sustained superior performance.
- Honesty and integrity.
- Flexibility and discipline in action.

STEEL SOLUTIONS

HR Sheets & Plates:

Size: 1.5 mm ~ 90 mm

Width: 1250 mm, 1500 mm, 1600 mm, 1800 mm, 2000 mm, 2500 mm

MS Checkered Sheets & Plates

Size: 3 mm ~ 10 mm

Width: 1250 mm, 1500 mm

CRCA Sheets

Size: 0.5 mm ~ 3 mm

Width: 1220 mm, 1250 mm, 1500 mm, 1550 mm

GP/GPSP Sheets & Coils

Size: 0.5 mm ~ 3 mm

Width: 1220 mm, 1250 mm, 1500 mm, 1550 mm

COIL

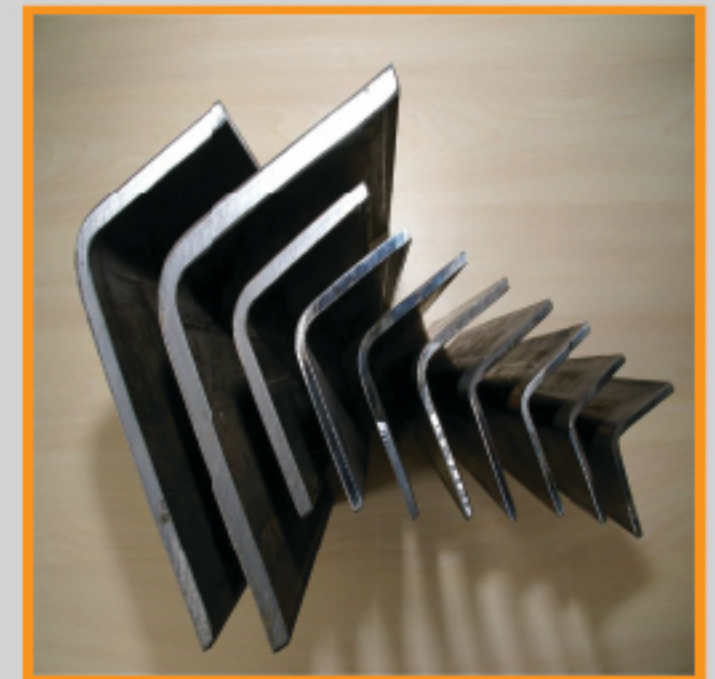
Size: 1.5 mm ~ 16 mm

Width: 1250 mm, 1500 mm



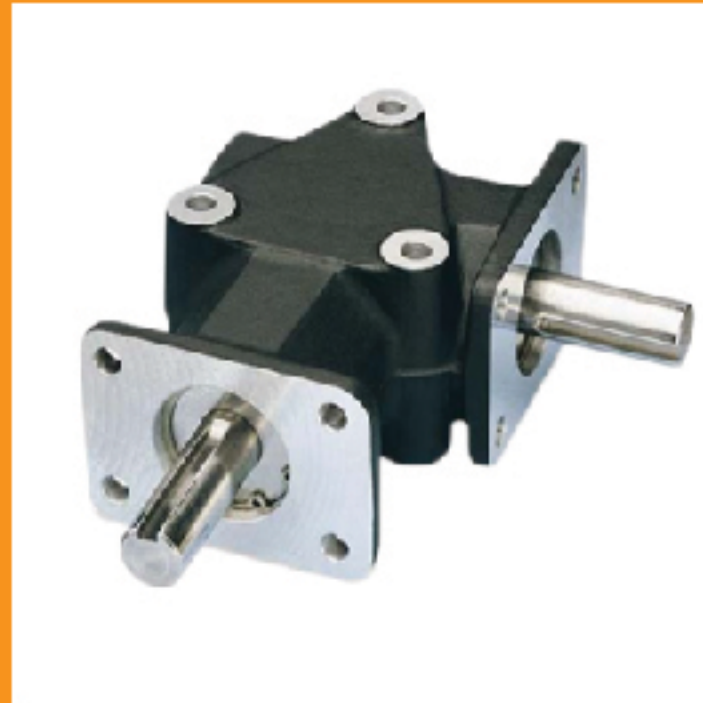
MILD STEEL ANGLE

Size (mm)	WT/MTR(kas)	WT/FT(kas)
25x25x3	1.7	0.52
25x25x5	1.7	0.52
30x30x3	1.7	0.52
37x37x3	1.7	0.52
35x35x5	2.6	0.79
40x40x4	2.4	0.7
40x40x5	2.9	0.9
40x40x6	3.5	1.07
45x45x5	3.3	1.01
50x50x4	3	0.9
50x50x5	3.7	1.13
50x50x6	4.5	1.38
65x65x5	4.9	1.5
65x65x6	5.8	1.8
65x65x8	7.7	2.36
65x65x10	9.4	2.9
75x75x5	5.7	1.7
75x75x6	6.8	2.08
75x75x8	8.9	2.73
75x75x10	11	3.37
90x90x6	8.2	2.5
90x90x8	10.8	3.29
90x90x10	13.4	4.09
100x100x6	9.2	2.8
100x100x8	12.1	3.69
100x100x10	14.9	4.54
100x100x12	17.7	5.4
110x110x8	13.8	4.21
110x110x10	16.6	5.06
110x110x12	20.8	6.34
130x130x8	15.9	4.85
130x130x10	19.7	6.01
130x130x12	23.5	7.16
130x130x16	30.7	9.36
150x150x8	22.9	6.98
150x150x10	22.9	6.98
150x150x12	27.3	8.32
150x150x16	35.8	10.91
150x150x20	44.1	13.45
200x200x12	36.9	11.25
200x200x16	48.5	14.79
200x200x20	60	18.29
200x200x25	73.9	22.53



TRANSMISSION LINK ANGLE

45x45x4/5
55x55x4/5
60x60x4/5/6
70x70x5/6
Unequal Angles
45x30x4/5



TRANSMISSION LINK ANGLE

Size (mm)	WT/MTR(kgs)	WT/FT(kgs)
116x100(STD)	23	7
116x100(LT)	20	6.13
152x152(STD)	37.1	11.3
152x152(MED)	34	10.4
152x152(LT)	30	9.2

MILD STEEL CHANNELS (ISMC)

Size (mm)	WT/MTR(kgs)	WT/FT(kgs)
70X35	4.2	1.3
70X40	5.7	1.7
75X40(LC)	7.1	2.2
100X50(LC)	7.9	2.4
100X50	9.6	2.9
125X65	13.1	4
100x50	9.2	2.82
125x65	13.1	4.01
150x75	16.8	5.1
200x75	22.3	6.8
250x80	34.2	10.4
300x90	36.3	11
400x100	50.1	15.3

MILD STEEL BEAMS (ISMB)

Size (mm)	WT/MTR(kgs)	WT/FT(kgs)
100x50(STD)	8.9	2.7
100x50(MED)	7	2.1
100x50(LT)	5.3	1.6
125x70(STD)	13.3	4.05
125x70(MED)	11.5	3.5
125x70(LT)	9	2.7
150x75(STD)	15	4.6
150x75(LT)	13.5	4.1
175x85	19.6	6
200x100	24.2	7.4
250x125	37.3	11.4
300x140	46	14
350x140	52.4	16
400x140	61.5	18.8
450x150	73.1	22.28
500x180	87.7	26.73
600x210	122.6	37.37

INDUSTRIAL QUALITY ROUND BARS

8 to 160mm dia. Both in MS and special steel

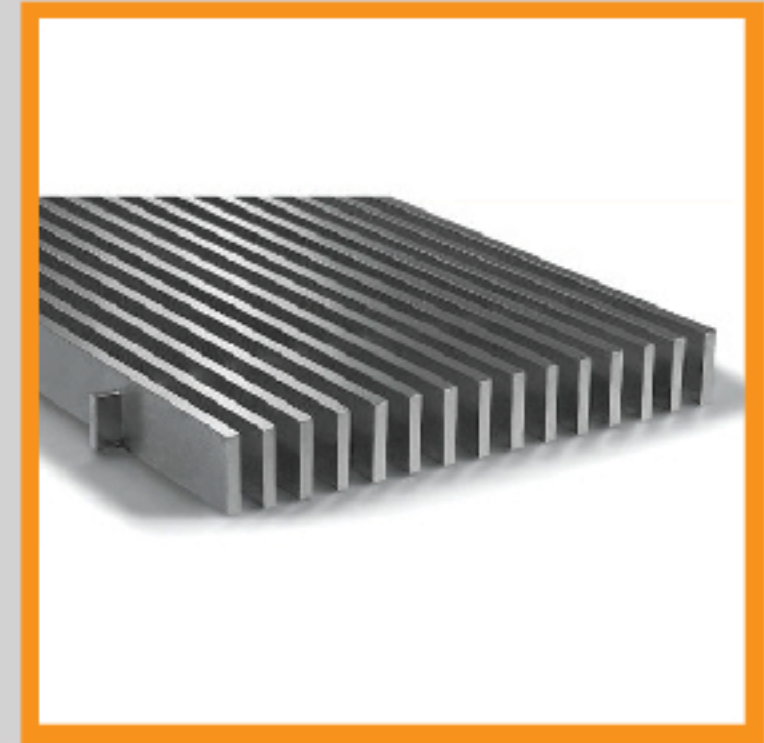
16/18/20/22/23.5/25/27/30/32/33.5/36/40/

42/48/50/52/56/58/60/63/65/70/75/80



MILD STEEL FLATS

Size(mm)
20x5/6
25x5/6/8/10/12
32/30x3
40x5/6/8/10/12/16/20/25
50x5/6/8/10/12/16/20/25
65x5/6/8/10/12/16/20/25/32/40
75x5/6/8/10/12/16/20/25/32/40
100x5/6/8/10/12/16/20/25
125x5x6/8/10/12/16/20/25
150x5/6/8/10/12/16/20/25
200x6/8/10/12/16/20/25
250x6/8/10/12/16/20/25



PIPES ROUND/SQUARE

Rectangular Hollow Sections (RHS) : 26 mm X 13 mm-400 mm X 200 mm
 Thickness : 0.8 mm – 12 mm
 Length: 4.0 m to 12 m

Square Hollow Sections (SHS) : 12 mm X 12 mm – 300 mm X 300 mm
 Thickness : 0.8 mm – 12 mm
 Length: 4.0 m to 12 m

Round Hollow Section : Size – RHS 20X15-300X250, SHS 20X20-275X275
 Thickness: 1.0 mm – 8.0 mm
 Length: 3.0 mm to 12.0 mm

